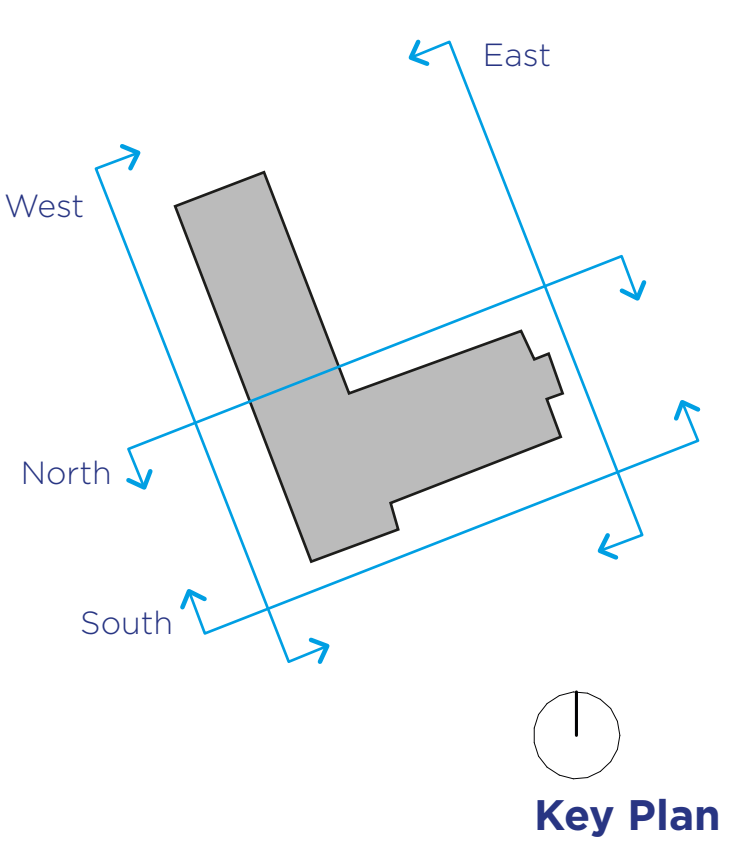


THE PROPOSAL: MAIN BLOCK ELEVATIONS



East Elevation



MAIN BLOCK MATERIALS

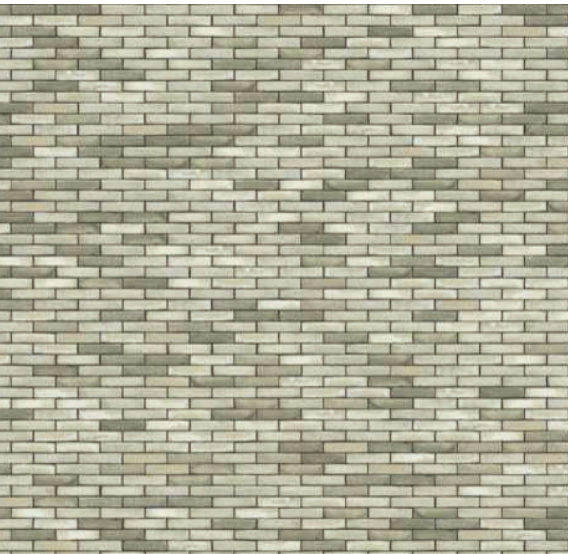
The main block is an 'L' shaped building formed from two blocks of 3 and 5 storeys in height. The 3 storey wing is predominately light brick, whilst the 5 storey wing has a brick base with a sealed metal cladding finish above.



West Elevation



Seamed Metal cladding



Brickwork



North Elevation



South Elevation